

***CRESTLINER***

# 2026 PRODUCT GUIDE





# THE WATER IS YOURS

Crestliner Boats are built to take you to the place where memories are made. From the early morning light to the last rays of sunset, you and your family simply want to be on the lake. Everything becomes clear out here, and it's not that complicated after all. Join us on the water.



## CONTENTS

- 07 Deep-V
- 08 Fish Hawk
- 10 Hawk
- 12 Kodiak
- 14 Pro Tiller & Discovery Tiller
- 16 Super Hawk
- 18 Sportfish
- 20 Authority
- 21 Commander & Commander Elite
- 22 Mod-V
- 23 Storm
- 24 XF & XFC
- 26 Ridge
- 27 Retriever CC / SC
- 28 Retriever Jon & Jon Deluxe
- 29 CR Jon & Outreach
- 30 Colors & Options
- 31 SureMount Accessories



## NEVER STOP INNOVATING

### CRESTLINER'S 80TH ANNIVERSARY

Crestliner has been one of the strongest names in boating for 80 years because we never rest on our laurels. We take what's proven and innovate continually as the years pass. Find out how we've navigated nearly a century of change—and how we plan to stride boldly into the next.

LEARN MORE

### 19 CONSECUTIVE CSI AWARDS

For the nineteenth consecutive year, Crestliner has received the Customer Satisfaction Index (CSI) Award from the NMMA, recognizing marine manufacturers with customer satisfaction levels of 90% and above.



# QUALITY ENDURES

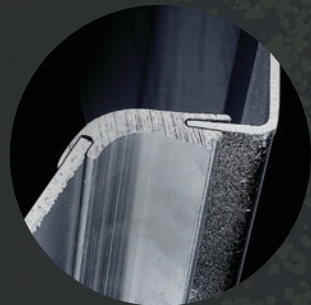
## THE INDUSTRY'S STRONGEST WARRANTY

Limited lifetime warranty on all main seam welds and a 3-year bow-to-stern warranty on virtually everything else—plus transferability to future owners. (Warranty differs on CR Jon and Outreach utility boats.)



## INTERLOCKING TONGUE-AND-GROOVE CONSTRUCTION

A one-piece, rock-solid and bonded hull for strength and durability



## DOUBLE-WELDED, WOOD-FREE TRANSOM

Built to handle the tremendous force of powerful outboards



## SUPERIOR STRUCTURAL INTEGRITY

A solid, all-welded stringer system reinforces the deck and hull



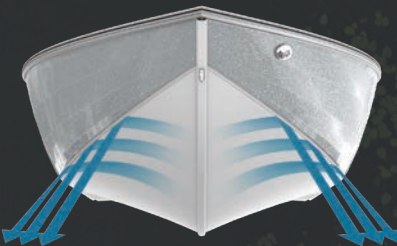
## WORK-HARDENED SIDEWALLS

Adds strength, rigidity, and long life to your boat



## REVERSE CHINE

Forces water down and away from the boat for a smoother, drier ride



## VARIABLE-DEGREE DEADRISE

Allows for quick planing and enhanced stability



## FOUR X DEEP-V HULL

Welded, four-panel hull with integrated spray rails enhance durability and repel water



Not all processes, features and statements apply to every Crestliner boat model.

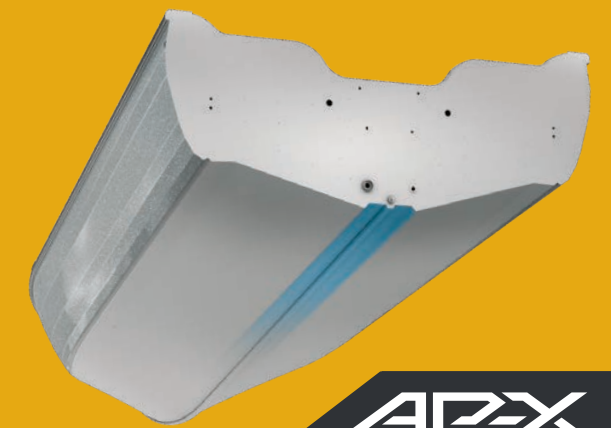
# AP-X HULL

The revolutionary AP-X Active Performance Hull provides maximum control, lightning-fast acceleration, and optimized engine performance. This is due to precision-engineered features like a recessed pad, dual tracking edges, variable-degree deadrise, and a full-length keel that combine to enhance responsiveness during the hole shot, on plane, turning, and deceleration.

## FEEL THE DIFFERENCE

From taking corners at speed to maximizing your engine operation, your on-the-water experience is unparalleled with the AP-X Hull. It's a notable difference from typical Deep-V hulls, and you'll feel it in smooth comfort and premium performance.

AP-X Hull is available on Sportfish (1950, 1850), Super Hawk (1850, 1750), Fish Hawk (2050, 1850, 1750).



**AP-X**  
ACTIVE PERFORMANCE HULL



# NEW FOR YOU



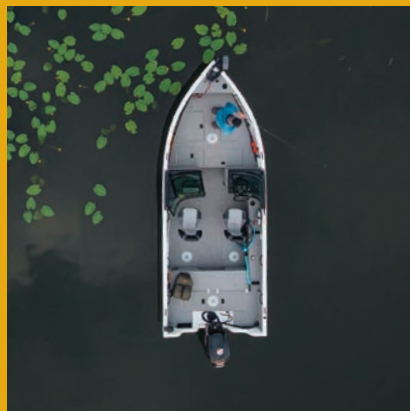
## 2050 FISH HAWK

The flagship of the Fish Hawk family is a big water dominator. With advanced performance and fishing features, including our exclusive AP-X Hull, the 2050 Fish Hawk provides the finest performance in its class. On the inside, you'll find generous storage, plus an optimized dual console, flexible seating, a deep, secure cockpit, and large bow and aft decks. It all adds up to a durable, powerful fishing boat that's ready to dominate the game fish of your choice in any water.



## XF SERIES

The new XF Series obliterates the competition with the largest bow decks in its class, providing maximum room for casting and fighting fish. The XFC models feature three-across bow seat bases so crappie anglers can work both sides of the boat. Add in a premium fiberglass console with room for a 12" flush graph, generous rod and tackle storage, and our durable all-welded aluminum Mod-V hull, and the XF Series is ready to kick bass and take names.



## 1850 KODIAK

The new 1850 Kodiak is a rugged Deep-V contender built to get you to the fish, to the job, to the campsite—wherever you need to go on the water, whether you fish, work, or play. Explore Kodiak today, and get back to the basics of adventure.



## RAPTOR PACKAGE

The Raptor package, available on the 1850 and 2050 Fish Hawk, is an exclusive upgrade featuring Raptor graphics and decals, custom steering wheel, phone charger, Mercury® SmartCraft® speed and tach gauges, swim platform with ladder, Rockford® stereo with two speakers, black seat bases and pedestals.

# DEEP-V

## BUILT FOR BIG WATER

Our advanced line of proven Deep-V boats are equally adept at multi-species big-water fishing and recreational watersports, with smooth and dry-riding hulls, deep and secure cockpits, ergonomic consoles, roomy storage and comfortable seating for the entire crew.





A LEGENDARY BOAT FOR LEGENDARY ANGLERS

The legendary Fish Hawk series is built to dominate big water. With our revolutionary AP-X Hull, cavernous storage, deep, secure cockpits, premium consoles, and comfortable, adjustable seating, this line of big water beasts is ready to conquer whatever species you pursue.

ASK ABOUT OUR NEW  
RAPTOR  
PACKAGE



AP-X Hull with Recessed Pad



High-Capacity Center Rod Locker



Angler-Inspired Console Design



Tournament-Style Fishing Seat

FISH HAWK



NEW

2050 FISH HAWK

APX

20' 6" (6 m) Overall Length	300 Max HP
102" (31 m) Beam	25" (64 cm) Transom Height
17° Deadrise	50 gal (189 L) Fuel
2,200# (821 kg) 8 people Max Capacity	2,101# (953 kg) SC 2,638# (973 kg) WT Weight (Boat+Max Engine, Dry)
12 gal (45L) / 28 gal (106L) Livewell	
EXPLORE NOW	



1850 FISH HAWK

APX

18' 7" (5.66 m) Overall Length	200 Max HP
96" (244 cm) Beam	25" (64 cm) Transom Height
15° Deadrise	32 gal (121 L) Fuel
1,810# (821 kg) 6 people Max Capacity	2,101# (953 kg) SC 2,194# (973 kg) WT Weight (Boat+Max Engine, Dry)
12 gal (45L) / 28 gal (106L) Livewell	
EXPLORE NOW	



1750 FISH HAWK

APX

17' 7" (5.36 m) Overall Length	150 Max HP
96" (244 cm) Beam	25" (64 cm) Transom Height
15° Deadrise	27 gal (102 L) Fuel
1,710# (776 kg) 6 people Max Capacity	1,998# (906 kg) SC 2,081# (944 kg) WT Weight (Boat+Max Engine, Dry)
12 gal (45L) / 28 gal (106L) Livewell	
EXPLORE NOW	



BORN FOR THE WATER

The perfect entry point into Deep-V boats, the Hawk is built on our legendary all-welded hull, with fishing and family features that will fill every day on the water with incredible memories. With standard jump seats, massive tackle and gear storage, and a deep, secure cockpit, the Hawk will keep smiles on faces and fish in the livewell.



Stern Livewell



Center Rod Storage Locker



Jump Seats Standard



Angler-Inspired Console Design

HAWK



1750 HAWK

17' 6" (5.33 m) Overall Length	115 Max HP
88" (26.82 m) Beam	25" (64 cm) Transom Height
12° Deadrise	20 gal (75.71 L) Fuel
1,600# (725.85 kg) 6 people Max Capacity	1,522# (690 kg) SC 1,659# (752 kg) WT Weight (Boat+Max Engine, Dry)
15 gal (56.78 L) Livewell	

EXPLORE NOW

1650 HAWK

16' 9" (5.11 m) Overall Length	90 Max HP
86.5" (220 m) Beam	25" (64 cm) Transom Height
12° Deadrise	19 gal (72 L) Fuel
1,450# (658 kg) 6 people Max Capacity	1,413# (741 kg) SC 1,548# (702 kg) WT Weight (Boat+Max Engine, Dry)
15 gal (56.78 L) Livewell	

EXPLORE NOW



MORE THAN JUST A BOAT

Bells? No thanks. Whistles? Keep ‘em. There’s no need for fancy frills and flashing lights here. Kodiak is a down-to-earth, tough-as-heck boat that will do what it has to do to make your adventure a success, no matter how hard you push it. From Canadian resorts to Midwest fish camp and from the mountain lakes of the west to the massive reservoirs of the south, this is the boat that can do it all.



Storage and Livewell



Angler-Inspired Console Design

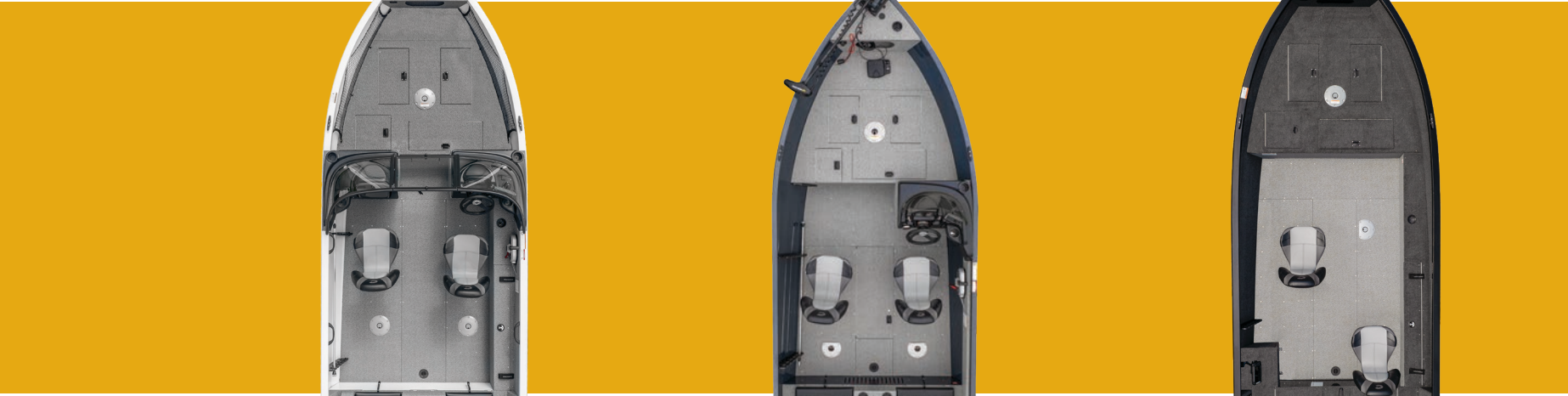


Optional folding conversion bench with jump seats



Comfortable, Durable Seating

KODIAK



(1850 shown)

(1650 shown)

(1850 shown)

	NEW		NEW		NEW	
	1850 KODIAK WT	1650 KODIAK WT	1850 KODIAK SC	1650 KODIAK SC	1850 KODIAK TILLER	1650 KODIAK TILLER
Overall Length	18' (5.5 m)	16' 4" (4.98 m)	18' (5.5 m)	16' 4" (4.98 m)	18' (5.5 m)	16' 4" (4.98 m)
Beam	81" (206 cm)	81" (206 cm)	81" (206 cm)	81" (206 cm)	81" (206 cm)	81" (206 cm)
Transom Height	20" (51 cm)	20" (51 cm)	20" (51 cm)	20" (51 cm)	20" (51 cm)	20" (51 cm)
Deadrise	10°	10°	10°	10°	10°	10°
Weight (Boat+Max Engine, Dry)	1,678# (761 kg)	1,195# (542 kg)	1,647# (747 kg)	1,195# (542 kg)	1,489# (675 kg)	1,162# (527 kg)
Max Capacity (Weight/Person)	1,650# (748 kg) / 6	1,300# (590 kg) / 5	1,650# (748 kg) / 6	1,300# (590 kg) / 5	1,550# (703 kg) / 5	1,300# (590 kg) / 5
Max HP Capacity	115 HP	60 HP	115 HP	60 HP	75 HP	60 HP
Aerated Livewell Capacity	17 gal (64 L)	17 gal (64 L)	17 gal (64 L)	17 gal (64 L)	17 gal (64 L)	17 gal (64 L)
Fuel Capacity	20 gal (76 L)	12 gal (45 L) portable	20 gal (76 L)	12 gal (45 L) portable	20 gal (76 L)	12 gal (45 L) portable
	EXPLORE NOW	EXPLORE NOW	EXPLORE NOW	EXPLORE NOW	EXPLORE NOW	EXPLORE NOW



CONTROL THAT NEVER COMPROMISES

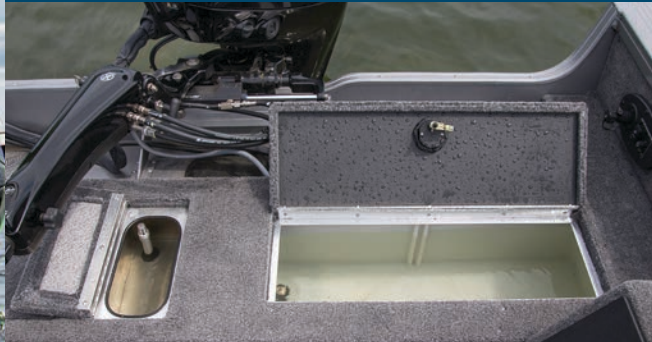
The tried-and-true Pro Tiller is designed with the most important part of the boat in mind: the driver. From the tiller handle to the command console to the livewell, everything is within reach and under your control. So whether you're trolling a weedline or scanning the graph, you'll be ready for anything.



Command Console



Bow Storage



Aerated Stern Livewell & Baitwell



High Capacity Center Rod Locker

PRO TILLER & DISCOVERY TILLER



1850 PRO TILLER

18' 6" (5.64 m)	90
Overall Length	Max HP
94" (239 cm)	25" (64 cm)
Beam	Transom Height
12°	32 gal (121 L)
Deadrise	Fuel Capacity
1,650# (748 kg)	1,734# (787 kg)
6 people	Weight (Boat+Max Engine, Dry)
Max Capacity	
12 gal (45 L) / 15 gal (57 L)	
Aerated Livewell Capacity (Bow / Stern)	

EXPLORE NOW

1750 PRO TILLER

17' 6" (5.33 m)	90
Overall Length	Max HP
94" (239 cm)	25" (64 cm)
Beam	Transom Height
12°	27 gal (102 L)
Deadrise	Fuel Capacity
1,600# (726 kg)	1,634# (741 kg)
6 people	Weight (Boat+Max Engine, Dry)
Max Capacity	
12 gal (45 L) / 15 gal (57 L)	
Aerated Livewell Capacity (Bow / Stern)	

EXPLORE NOW

1650 PRO TILLER

16' 10" (5.13 m)	75
Overall Length	Max HP
86.5" (220 cm)	20" (51 cm)
Beam	Transom Height
12°	20 gal (76 L)
Deadrise	Fuel Capacity
1,350# (612 kg)	1,444# (655 kg)
6 people	Weight (Boat+Max Engine, Dry)
Max Capacity	
15 gal (57 L)	
Aerated Livewell Capacity (Bow / Stern)	

EXPLORE NOW

1650 DISCOVERY TILLER

16' 6" (5.03 m)	60
Overall Length	Max HP
75.5" (192 cm)	20" (51 cm)
Beam	Transom Height
6°	Portable
Deadrise	Fuel Capacity
1,250# (567 kg)	1,095# (497 kg)
5 people	Weight (Boat+Max Engine, Dry)
Max Capacity	
11 gal (42 L)	
Aerated Livewell Capacity (Bow / Stern)	

EXPLORE NOW



VERSATILITY IS BUILT IN

The Super Hawk gives you and your family plenty of ways to experience life on the water. Push its spectacular fishing features to the limits in the morning, take the kids tubing and skiing in the afternoon, and end the day with a relaxed sunset cruise. No matter how you boat, the Super Hawk was built to do it all. And when you're working to please everyone in the family with the same rig, there's no better, more affordable choice.



Premium Console Design



Conversion Bow (Bow Pad Optional)



Jump Seats



Stern Platform Pad

SUPER HAWK



1950 SUPER HAWK

19' 9" (6.02 m) Overall Length	225 Max HP
98" (249 cm) Beam	25" (64 cm) Transom Height
18° Deadrise	40 gal (151 L) Fuel
2,000# (907kg) 9 people Max Capacity	2,341# (1,062 kg) Weight (Boat+Max Engine, Dry)
10 gal (38 L) / 17 gal (64 L) Aerated Livewell Capacity (Bow / Stern)	

EXPLORE NOW



1850 SUPER HAWK



18' 9" (5.72 m) Overall Length	200 Max HP
96" (244 cm) Beam	25" (64 cm) Transom Height
15° Deadrise	32 gal (121 L) Fuel
1,800# (8161 kg) 8 people Max Capacity	2,155# (977 kg) Weight (Boat+Max Engine, Dry)
10 gal (38 L) / 13 gal (49L) Aerated Livewell Capacity (Bow / Stern)	

EXPLORE NOW



1750 SUPER HAWK



17' 9" (5.41 m) Overall Length	175 Max HP
94" (239 cm) Beam	25" (64 cm) Transom Height
15° Deadrise	28 gal (106 L) Fuel
1,700# (770 kg) 7 people Max Capacity	1,934# (877 kg) Weight (Boat+Max Engine, Dry)
10 gal (38 L) / 13 gal (49L) Aerated Livewell Capacity (Bow / Stern)	

EXPLORE NOW

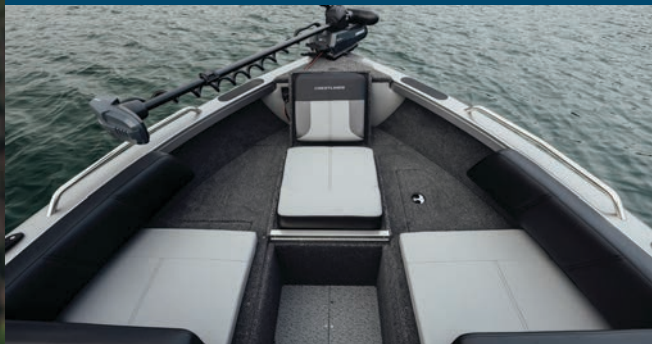


FISH AND PLAY THE DAY AWAY

Our flagship Deep-V Sportfish is packed with the most innovative, high-performance recreation and fishing features—putting it at the top of our lineup and the top of your wish list. So whether it becomes your family’s main hangout or your go-to fishing partner, one thing is sure: you’ll be ready for anything.



Premium Console Design



Conversion Bow



Swim Platform with Ladder



Stern Bench (1950 shown)

SPORTFISH



2250 SPORTFISH

22' 11" (6.99 m) Overall Length	400 Max HP
102" (259 cm) Beam	25" (64 cm) Transom Height
17° Deadrise	54 gal (204 L) Fuel Capacity
2,400# (1,089 kg) 10 people Max Capacity	3,083# (1,398 kg) Weight (Boat+Max Engine, Dry)
14 gal (53 L) / 19 gal (72 L) Aerated Livewell Capacity (Bow / Stern)	

EXPLORE NOW

2050 SPORTFISH

20' 10" (6.35m) Overall Length	225 Max HP
98" (249 cm) Beam	25" (64 cm) Transom Height
17° Deadrise	40 gal (151 L) Fuel Capacity
2,100# (953 kg) 9 people Max Capacity	2,857# (1,296 kg) Weight (Boat+Max Engine, Dry)
14 gal (53 L) / 14 gal (53 L) Aerated Livewell Capacity (Bow / Stern)	

EXPLORE NOW

1950 SPORTFISH



19' 11" (6.07 m) Overall Length	200 Max HP
96" (244 cm) Beam	25" (64 cm) Transom Height
15° Deadrise	32 gal (121 L) Fuel Capacity
1,850# (839 kg) 8 people Max Capacity	2,255# (1,023 kg) Weight (Boat+Max Engine, Dry)
14 gal (53 L) / 14 gal (53 L) Aerated Livewell Capacity (Bow / Stern)	

EXPLORE NOW

1850 SPORTFISH

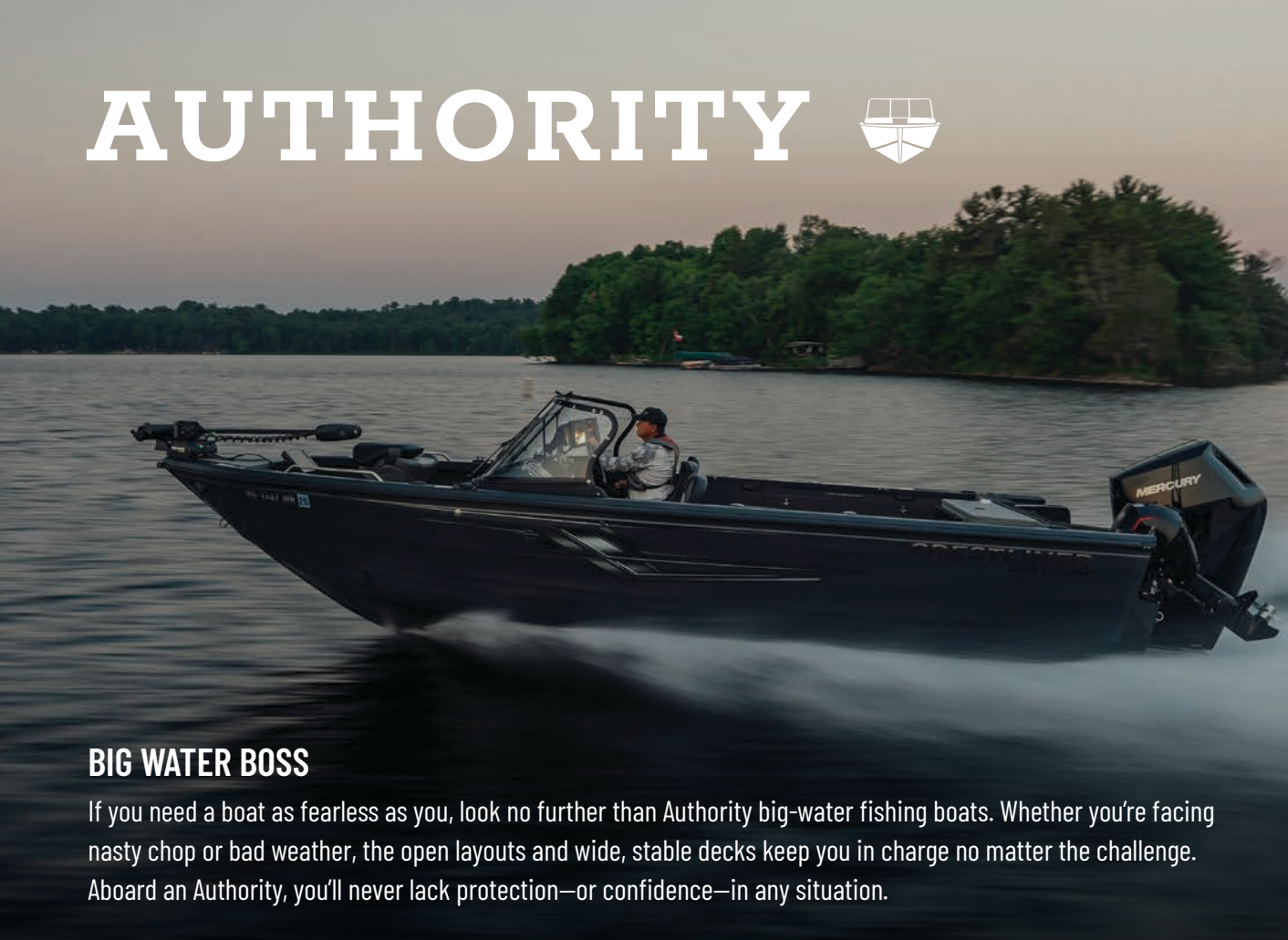


18' 11" (5.77 m) Overall Length	200 Max HP
96" (244 cm) Beam	25" (64 cm) Transom Height
15° Deadrise	32 gal (121 L) Fuel Capacity
1,850# (839 kg) 8 people Max Capacity	2,205# (1,000 kg) Weight (Boat+Max Engine, Dry)
14 gal (53 L) / 28 gal (106 L) Aerated Livewell Capacity (Bow / Stern)	

EXPLORE NOW



# AUTHORITY



## BIG WATER BOSS

If you need a boat as fearless as you, look no further than Authority big-water fishing boats. Whether you're facing nasty chop or bad weather, the open layouts and wide, stable decks keep you in charge no matter the challenge. Aboard an Authority, you'll never lack protection—or confidence—in any situation.



Premium Console Design



Vertical Rod Holders



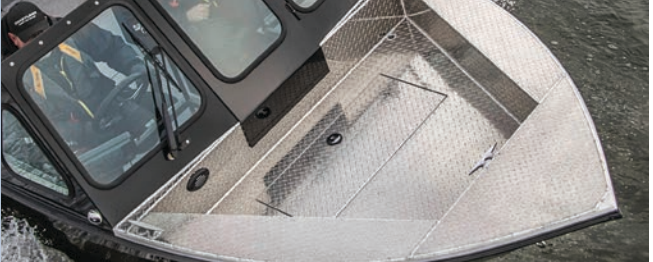
Bow & Stern Livewells

# COMMANDER & COMMANDER ELITE



## TAKE COMMAND OF THE WATER

The tougher the fishing, the harder Commander fishes. They're built tough for rough water and the most demanding fishing tasks imaginable. With ultra-durable, chop-crushing hulls and advanced fishing features for trolling, casting, and more, the Commander and Commander Elite bring everything you need.



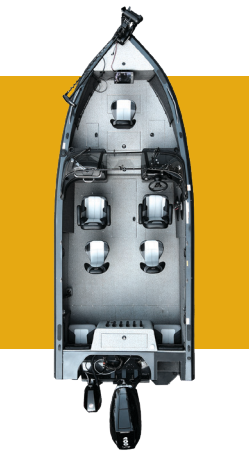
Diamond-Plate Bow (Elite only)



Ultra-Tough All-Aluminum Cockpit



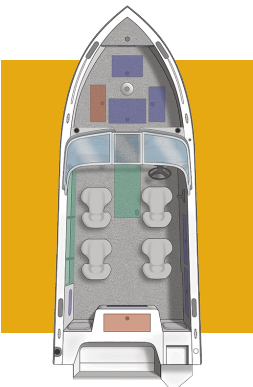
Bench Seat with Storage Compartment (Optional)



### 2250 AUTHORITY

22' 11" (6.99 m) Overall Length	400 Max HP
102" (259 cm) Beam	25" (64 cm) Transom Height
17° Deadrise	54 gal (204 L) Fuel
2,400# (1,089 kg) 10 people Max Capacity	2,870# (1,302 kg) Weight (Boat+Max Engine, Dry)
15 gal (57 L) / 20 gal (76 L) Aerated Livewell (Bow / Stern)	

EXPLORE NOW



### 2050 AUTHORITY

20' 10" (6.35 m) Overall Length	225 Max HP
98" (249 cm) Beam	25" (64 cm) Transom Height
17° Deadrise	40 gal (151 L) Fuel
2,100# (953 kg) 9 people Max Capacity	2,530# (1,148 kg) Weight (Boat+Max Engine, Dry)
15 gal (57 L) / 20 gal (76 L) Aerated Livewell (Bow / Stern)	

EXPLORE NOW



### 2050 COMMANDER

Overall Length	20' 8" (6.30 m)
Beam	94" (239 cm)
Transom Height	25" (64 cm)
Deadrise	17°
Weight (Boat+Max Engine, Dry)	2,226# (1,010 kg)
Max Capacity (Weight/Person)	2,220# (1007 kg) / 8
Max HP Capacity	200 HP
Aerated Livewell Capacity	18 gal (68 L)
Fuel Capacity	40 gal (151 L)

EXPLORE NOW

### 1850 COMMANDER

Overall Length	18' 8" (5.64 m)
Beam	94" (239 cm)
Transom Height	25" (64 cm)
Deadrise	17°
Weight (Boat+Max Engine, Dry)	2,021# (917 kg)
Max Capacity (Weight/Person)	2,101# (953 kg) / 6
Max HP Capacity	150 HP
Aerated Livewell Capacity	18 gal (68 L)
Fuel Capacity	33 gal (125 L)

EXPLORE NOW

### 2050 COMMANDER ELITE

Overall Length	21' 7" (6.58 m) w/ SST 20' 8" (6.30 m)
Beam	94" (239 cm)
Transom Height	25" (64 cm)
Deadrise	17°
Weight (Boat+Max Engine, Dry)	2,311# (1,048 kg)
Max Capacity (Weight/Person)	2,305# (1046 kg) / 8
Max HP Capacity	200 HP
Aerated Livewell Capacity	22 gal (83 L)
Fuel Capacity	40 gal (151 L)

EXPLORE NOW

### 1850 COMMANDER ELITE

Overall Length	19' 7" (5.97 m) w/ SST 18' 9" (5.72 m)
Beam	94" (239 cm)
Transom Height	25" (64 cm)
Deadrise	17°
Weight (Boat+Max Engine, Dry)	2,076# (942 kg)
Max Capacity (Weight/Person)	1,900# (862 kg) / 6
Max HP Capacity	150 HP
Aerated Livewell Capacity	22 gal (83 L)
Fuel Capacity	33 gal (125 L)

EXPLORE NOW



COMMANDER

COMMANDER ELITE



# MOD-V

## FROM WEEKEND WARRIOR TO TOURNEY PRO

Crestliner Mod-Vs have the largest casting decks in their class, making them ideal for bass and crappie fishing. Fast, shallow-drafting, wood-free hulls let you target the fish where they live, whether you target largemouth in southern reservoirs, smallmouth in the Midwest, or pike and musky in the northern wilds.

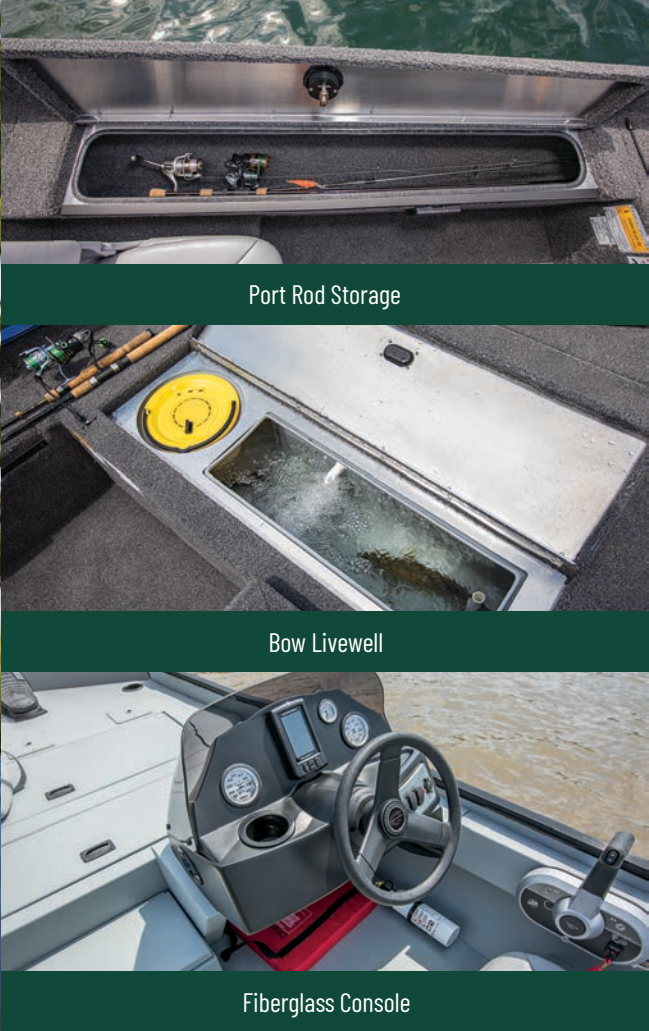


# STORM



## READY FOR ANYTHING

The versatile Storm Mod-V fishing boat is ready to seek any species, from panfish to crappie, bass to walleye, and pike to musky. Affordable and built for a lifetime of multi-species fishing, these Mod-V performers top the list for first-time boat buyers.



Port Rod Storage

Bow Livewell

Fiberglass Console



### 1700 STORM

17' (5.18 m) Overall Length	60 Max HP
75" (191 cm) Beam	20" (51 cm) Transom Height
8° Deadrise	12 gal (45 L) Portable Fuel
1,101# (499 kg) 4 people Max Capacity	930# (422 kg) Weight (Boat+Max Engine, Dry)
17 gal (64 L) Aerated Livewell	

EXPLORE NOW



### 1600 STORM

16' (4.88 m) Overall Length	50 Max HP
75" (191 cm) Beam	20" (51 cm) Transom Height
8° Deadrise	6 gal (23 L) Portable Fuel
936# (424 kg) 3 people Max Capacity	857# (389 kg) Weight (Boat+Max Engine, Dry)
17 gal (64 L) Livewell	

EXPLORE NOW



DON'T GO FISHING. GO CATCHING.

The new XF Series from Crestliner brings an optimized fishing concept to bass and crappie anglers—starting with the largest bow decks in their class for maximum casting and fish-fighting mobility. The premium fiberglass console has room for a 12" flush-mount graph, and storage abounds for rods up to 8 feet and all the tackle you need.



Wide Casting Deck



23-Gallon Stern Livewell



Center Rod Locker (XF 189)



Fiberglass Console

XF & XFC



NEW XF 189

18' 10" (5.74 m) Overall Length	115/150** HP Max HP
90" (229 cm) Beam	20" (51 cm) Transom Height
10° Deadrise	21 gal (79.5 L) Fuel Capacity
1,279# (580 kg) 4 people Max Capacity	1,736# (787 kg) Weight (Boat+Max Engine, Dry)
23 gal (87 L) Aerated Stern Livewell Capacity	

EXPLORE NOW



NEW XF 179

17' 8" (5.38 m) Overall Length	90 Max HP
90" (229 cm) Beam	20" (51 cm) Transom Height
10° Deadrise	21 gal (79.5 L) Fuel Capacity
1,178# (555 kg) 4 people Max Capacity	1,549# (703 kg) Weight (Boat+Max Engine, Dry)
23 gal (87 L) Aerated Stern Livewell Capacity	

EXPLORE NOW



NEW XFC 189

18' 10" (5.74 m) Overall Length	115/150** HP Max HP
90" (229 cm) Beam	20" (51 cm) Transom Height
10° Deadrise	21 gal (79.5 L) Fuel Capacity
1,279# (580 kg) 4 people Max Capacity	1,786# (810 kg) Weight (Boat+Max Engine, Dry)
23 gal (87L) / 23 gal (87L) Aerated Livewell Capacity (Bow / Stern)	

EXPLORE NOW



NEW XFC 179

17' 8" (5.38m) Overall Length	90 Max HP
90" (229 cm) Beam	20" (51 cm) Transom Height
10° Deadrise	21 gal (79.5 L) Fuel Capacity
1,178# (534 kg) 4 people Max Capacity	1,599# (725 kg) Weight (Boat+Max Engine, Dry)
23 gal (87L) / 23 gal (87L) Aerated Livewell Capacity (Bow / Stern)	

EXPLORE NOW

\*\*Requires 150HP Max Package



# RIDGE



## 1700 RIDGE

16' 11" (5.16 m) Overall Length	75 Max HP
85" (216 cm) Beam	20" (51 cm) Transom Height
3.5° Deadrise	21 gal (79.5 L) Fuel
1,128# (512 kg) 4 people Max Capacity	1,344# (610 kg) Weight (Boat+Max Engine, Dry)
16 gal (60 L) Livewell	

EXPLORE NOW

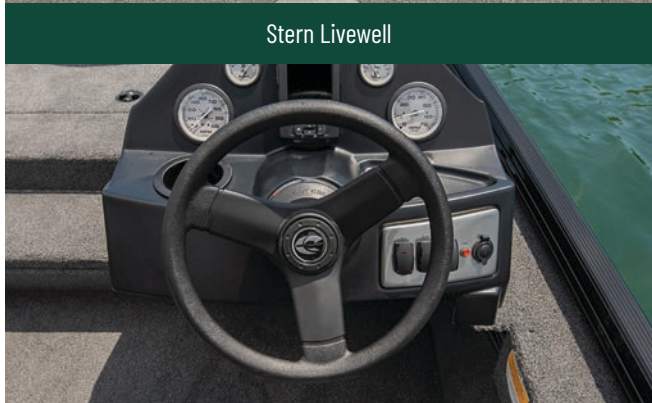


## GETS YOU TO THE FISH

The Ridge drafts shallow and moves quick, getting you to the fish no matter where they hide. Affordable pricing and built-in versatility make this the perfect mid-level bass fishing boat, while a nimble Mod-V hull and clever interior fishing features mean you can get to the fish and start catching.



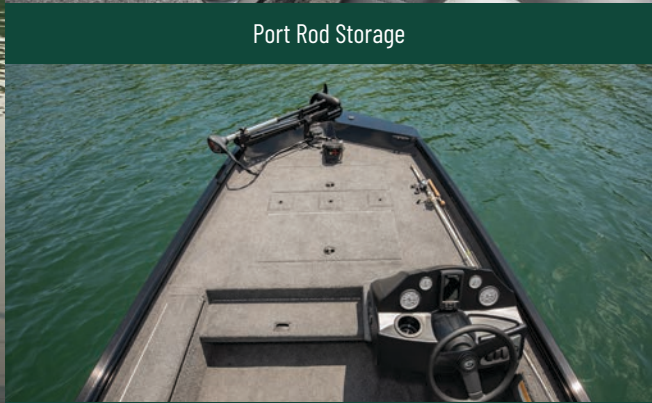
Stern Livewell



Feature Rich Console



Port Rod Storage



Large Bow Casting Deck

# RETRIEVER CC/SC



## WEATHER EVERY SEASON WITH STRENGTH

For the hunter or angler who needs a boat that can keep up from one season to the next, the unshakable Retriever CC (Center Console) and SC (Side Console) deliver dependable performance for every outing.

	2070 CC/SC/SCHD	1860 CC/SC	1860 RCC	1760 SC	1660 SC	1870 FCC	1660 FCC
Overall Length	20' (6.09 m)	18' (5.49 m)	18' (5.49 m)	17' (5.18 m)	16' (4.88 m)	18' (5.45m)	16' (4.88 m)
Beam	96" (244 cm)	85" (216 cm)	85" (216 cm)	85" (216 cm)	85" (216 cm)	96" (244 cm)	85" (216 cm)
Transom Height	20" (51 cm)	20" (51 cm)	20" (51 cm)	20" (51 cm)	20" (51 cm)	27" (69 cm)	22" (56 cm)
Deadrise	3.5°	3.5°	3.5°	3.5°	3.5°	3.5°	3.5°
Weight (Boat+Max Engine, Dry)	1,581# (717 kg) CC/SC 1,745# (791 kg) SCHD	1,329# (603 kg)	1,045# (474 kg)	1,249# (567 kg)	1,087# (493 kg)	1348# (611 kg)	1,213# (550 kg)
Max Capacity (Weight/Person)	1,862# (845 kg) / 7	1,578# (716 kg) / 7	1,600# (726 kg) / 6	1,260# (572 kg) / 5	1,001# (454 kg) / 4	1623# (736 kg) / 7	1128# (512 kg) / 4
Max HP Capacity	150 HP	90 HP	60 HP	75 HP	60 HP	150 HP	65 HP
Aerated Livewell Capacity	16 gal (60 L) CC/SC 60 gal (227 L) SCHD	16 gal (60 L)	16 gal (60 L)	16 gal (60 L)	16 gal (60 L)	17 gal (64 L)	13 gal (49)
Fuel Capacity	19 gal (72 L)	19 gal (72 L)	Portable	19 gal (72 L)	Portable	19 gal (72 L)	Portable



1860 CC also available in tunnel jet hull

EXPLORE NOW

EXPLORE NOW

EXPLORE NOW

EXPLORE NOW

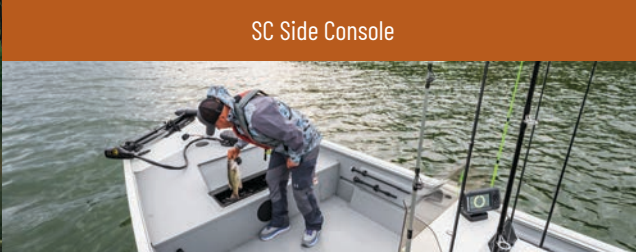
EXPLORE NOW

EXPLORE NOW

EXPLORE NOW



SC Side Console



RCC Livewell and Console



FCC Center Console



CC

SC

FCC



# RETRIEVER JON & JON DELUXE

## BUILT TOUGH

With multiple layouts for any on-the-water application you can imagine, the Retriever Jon and Jon DLX series let you fish, hunt or work where you want, the way you want.



Deluxe Stern Bench with Optional Seat & Clip



Deluxe Bow with Storage and 16-Gallon Livewell



Quick Access Rod Rack



## GO ANYWHERE WITH CONFIDENCE

When you're laser-focused on getting where you need to go to get the job done, the CR Jon is exactly what you need, bringing affordable performance to any adventure.



## ADVENTURE FOR EVERYONE

The Outreach is a dependable utility boat—plain and simple. Built to last, these easy-to-own Deep-V hull aluminum boats offer a great time on the water at a reasonable price.



	2070	1860	1760	1660	1860 DLX	1760 DLX	1660 DLX
Overall Length	20' (6.10 m)	18' (5.49 m)	17' (5.18 m)	16' (4.88 m)	18' (5.49 m)	16' 10" (5.13 m)	16' (4.87 m)
Beam	96" (244 cm)	85" (216 cm)	80" (203 cm)	80" (203 cm)	85" (216 cm)	85" (216 cm)	85" (216 cm)
Transom Height	20" (51 cm)	20" (51 cm)	20" (51 cm)	20" (51 cm)	20" (51 cm)	20" (51 cm)	20" (51 cm)
Deadrise	3.5°	3.5°	3.5°	3.5°	3.5°	3.5°	3.5°
Weight (Boat+Max Engine, Dry)	1,069# (485 kg)	961# (436 kg)	937# (425 kg)	921# (418 kg)	1,082# (491 kg)	967# (439 kg)	917# (416 kg)
Max Capacity (Weight/Person)	1,900# (862 kg) / 7	1,659# (753 kg) / 6	1,151# (522kg) / 5	1,041# (472 kg) / 4	1,659# (753 kg) / 6	1,300# (560 kg) / 5	1,051# (477 kg) / 4
Max HP Capacity	75 HP	60 HP	50 HP	40 HP	75 HP	60 HP	50 HP
Aerated Livewell Capacity	Optional	Optional	Optional	Optional	16 gal (60 L)	16 gal (60 L)	16 gal (60 L)
Fuel Capacity	Portable	Portable	Portable	Portable	Portable	Portable	Portable



EXPLORE NOW

EXPLORE NOW

EXPLORE NOW

EXPLORE NOW

EXPLORE NOW

EXPLORE NOW

EXPLORE NOW



JON

JON DLX



EXPLORE NOW

EXPLORE NOW

EXPLORE NOW

EXPLORE NOW

EXPLORE NOW

EXPLORE NOW

EXPLORE NOW

EXPLORE NOW

EXPLORE NOW

	1852MT	1648/M	1446M/MT	1436L	1240	1040	1032	1672 OUTREACH	1469 OUTREACH
Overall Length	18' (5.48 m)	15' 10" (4.83 m)	14' (4.27 m)	14' (4.27 m)	11' 9" (3.58 m)	10' (3.04 m)	10' (3.04 m)	16' 2" (4.93 m)	14' 6" (4.42 m)
Beam	75" (191 cm)	70" (178 cm)	70" (178 cm)	57" (145 cm)	56" (142 cm)	56" (142 cm)	48" (122 cm)	72" (183 cm)	69" (175 cm)
Transom Height	20" (51 cm)	15" (38 cm) 1648/M 20" (51 cm) MT cm)	15" (38 cm) 1446/M 20" (51 cm) MT	15" (38 cm)	15" (38 cm)	15" (38 cm)	15" (38 cm)	20" (51 cm)	20" (51 cm)
Weight (Boat Only, Dry)	475# (215 kg)	275# (125 kg)	260# (118 kg)	145# (66 kg)	107# (49 kg)	87# (40 kg)	80# (36 kg)	325# (147 kg)	285# (129 kg)
Max Capacity (Weight/Person)	1,443# (655 kg) / 6	1,014# (460 kg) / 4 1,000# (454 kg) / 4 M/MT	831# (377 kg) / 4	560# (254 kg) / 3	535# (243 kg) / 2	419# (190 kg) / 2	275# (125 kg) / 2	1,150# (522 kg) / 5	1,000# (499 kg) / 4
Max HP Capacity	40 HP	30 HP	25 HP	15 HP	10 HP	5 HP	3 HP	25 HP	25 HP



EXPLORE NOW

EXPLORE NOW

EXPLORE NOW

EXPLORE NOW

EXPLORE NOW

EXPLORE NOW

EXPLORE NOW

EXPLORE NOW

EXPLORE NOW



# MAKE IT YOURS

The right features. The right options. The right colors. **The right boat.**

### COLORS

Premium, vibrant finishes to help your boat stand out

Black Metallic	Silver Metallic	Bright White	True Blue Metallic
Fire Red Metallic	Canyon Brown Metallic	Gunmetal Gray	Clear Coat <small>(Shown on Black Metallic paint. Available on select models with one-color exterior paint.)</small>

**MOD V ONLY**

Mossy Oak® Breakup® <small>(Interior/Exterior)</small>	Mossy Oak® Shadow Grass Blades® <small>(Interior/Exterior)</small>	Marsh Tan <small>(Interior/Exterior)</small>	Olive Drab <small>(Interior/Exterior)</small>

### ENGINES

Mercury outboards power your boat reliably and efficiently

### OPTIONS

Fishing accessories, comfort upgrades, flooring, tops and more

#### CARPET SWATCHES

Gray Carpet	Tan Carpet <small>(Deep-V Only)</small>

#### VINYL FLOORING

Gray Vinyl	Tan Vinyl

#### VINYL SEATING

(Deep-V Only)

Gray Vinyl	Tan Vinyl

#### INTERIOR

(Mod-V Only)

Crest-Liner Interior Coating	Matte Gray Crest-Liner Interior Coating

### TRAILERS

Transport your new boat in safety and style

### PACKAGES

Customize with a preselected platinum or sport package

ASK ABOUT OUR NEW **RAPTOR PACKAGE**

**BUILD YOUR BOAT**



## DEEP-V SUREMOUNT GUNNEL ACCESSORIES

Removable SureMount aluminum accessory brackets and mounts let you slide your favorite accessories along the gunnel for perfect placement without drilling.

Rod Holder

Cutting Station

Drink Holder

Gun Holder

Downrigger Bracket

2" G-Hold Net Holder

Accessory & Drink Holder

Mobile Device Holder

**FISHING**  
Rod holders, downriggers, cleaning stations and more

**TOOL MANAGEMENT**  
Keep pliers, nets, scissors and knives at hand

**DRINK HOLDERS**  
There are never enough drink holders. Add more!

**OTHER**  
Gun holders, net brackets, phone holders and more



**CRESTLINER**  
**80<sup>TH</sup>**  
EST. 1946

# DOMINATE THE WATER

EXPLORE NOW



The information contained within this catalog is believed to be correct and current. Prices, options, and features are subject to change without notice. Model year boats may not contain all the features or meet specifications described herein. Options may affect physical dimensions. Confirm availability of all accessories and equipment with an authorized Crestliner dealer prior to purchase. Outboard model weights shown in this catalog reflect the approximate weight of the boat only, and do not include weights of the outboard motor or accessories installed. All boats meet or exceed United States Coast Guard regulations, applicable American Boat and Yacht Council standards and are certified by the National Marine Manufacturer's Association. Our proven construction and its durability allow us to offer you one of the best warranties in the industry. Crestliner was the first of all aluminum boat manufacturers to offer a limited LIFETIME hull warranty to the original owner. All main seam welds are covered. Interior support construction carries a limited 10-year warranty. Plus, you get a limited 3-year bow-to-stern warranty on virtually everything else. It gets better...Crestliner's warranty is transferable! When it's time to upgrade to a new Crestliner, you have the option to transfer the warranty to the second owner. (Limited Lifetime warranty differs for CR Jon boats.) Some restrictions apply. For complete details, a copy of our limited warranty is attached to each new boat or may be obtained from your Crestliner dealer or downloaded from [crestliner.com](http://crestliner.com). Many boats featured in this catalog are shown with available options. Every effort was made to ensure that this information was accurate at the time of printing. Crestliner assumes no responsibility for errors in type, in print or in photos. Please follow the rules of safe boating, be courteous to others and respect the marine environment. Special thanks to NMMA®, Onyx®, Mercury Marine®, Power-Pole®, and Ruttger's Bay Lake Resort.

©2025 Crestliner / A Brunswick boat company. Printed in USA